



United Nations
Economic Commission for Africa

Office for
Eastern Africa



Preliminary Draft

Socio-economic Assessment of Blue Potential in Seychelles

21 April 2021

Read draft assessment at:
bit.ly/SeychellesBE

Stuart Laing

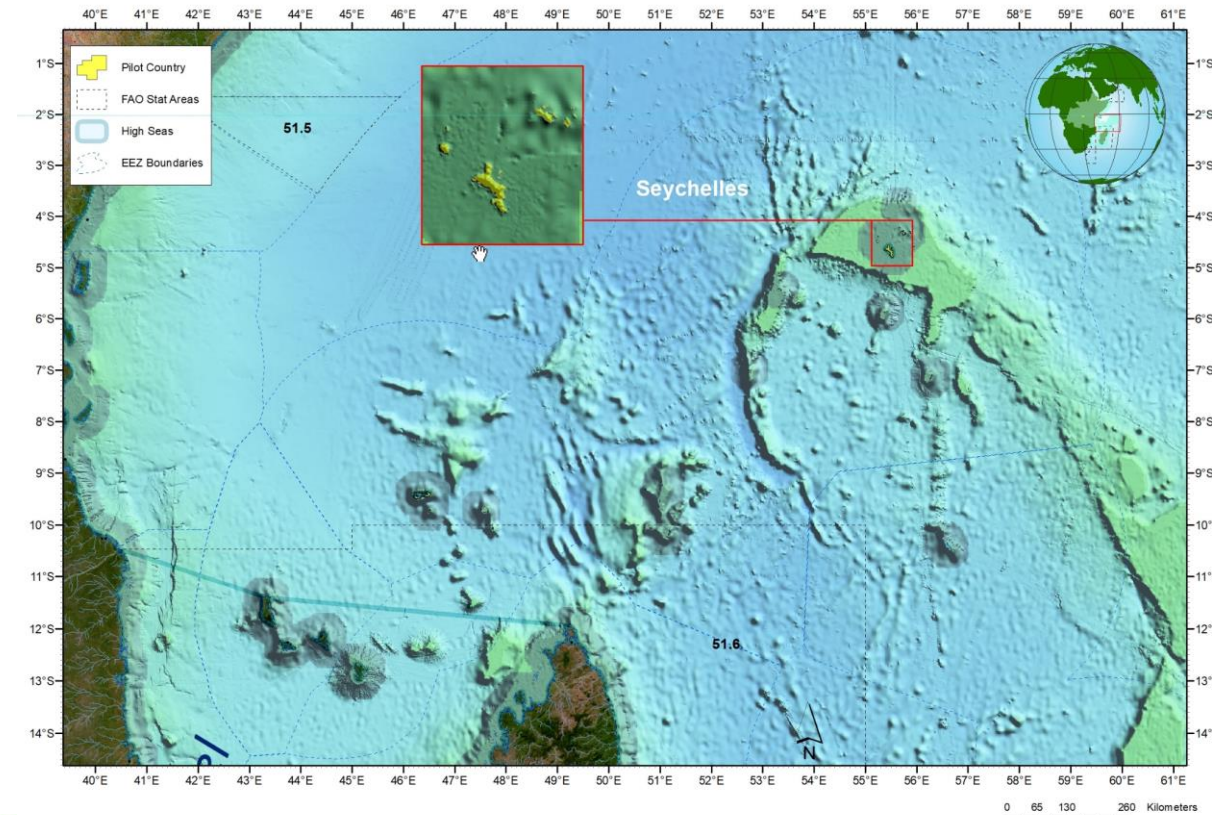
Researcher, *James Michel* Blue Economy Research Institute
University of Seychelles



Seychelles

OVERVIEW THE BEVTK SERIES OF CONSULTANCIES

- BEVTK = Blue Economy Valuation Toolkit
- UNECA identified a gap – BE reporting
- Seychelles identified as a pilot:
 - Leading role in Blue Economy space
 - Island status



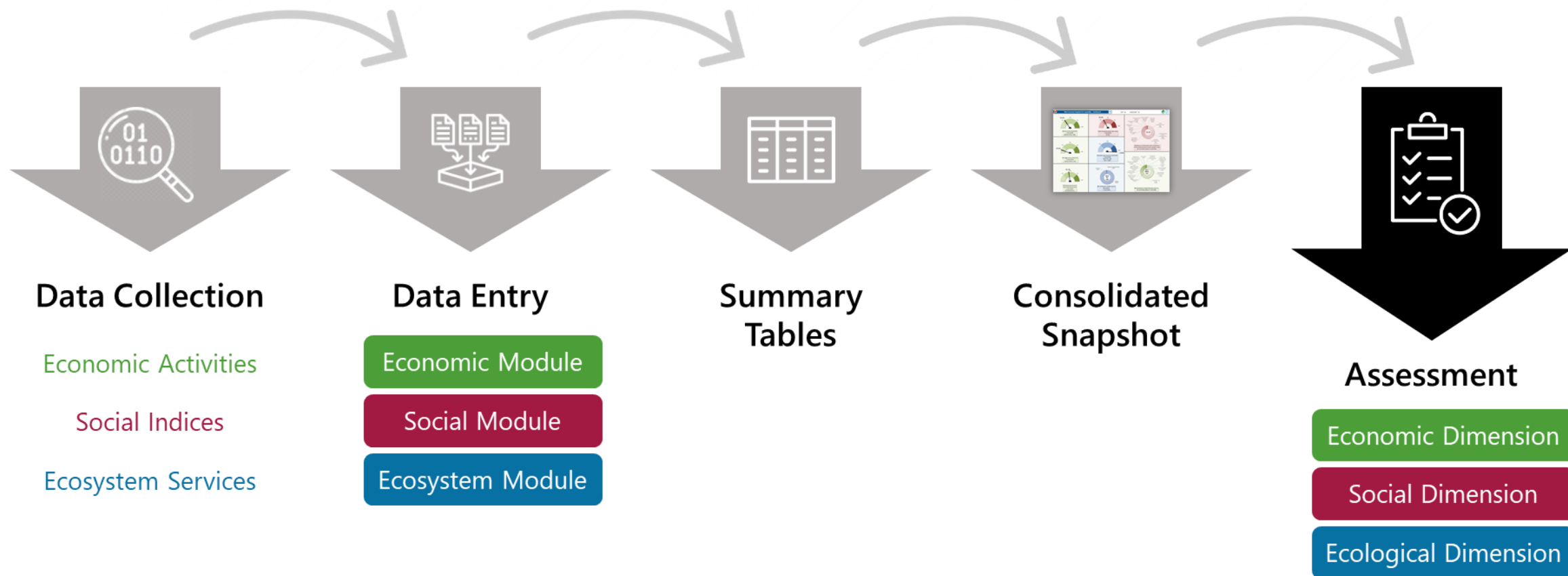
PHASE 1: PILOTING THE BEVTK

- **Focus: Developing the BEVTK**
- **Identify data sources**
- **Interact with stakeholders**
- **Identify challenges**
- **Test the BEVTK**

PHASE 2: REFINING THE BEVTK

- **Focus: Social data, refining the BEVTK**
- **Establishing social indicators relevant to UNECA and Seychelles**
- **SDG approach**
- **Consider social indicators unique to Seychelles that are measurable**

METHODOLOGY BEHIND THE BEVTK



01 THE BLUE ECONOMY IN SEYCHELLES

The Island State's dependence on Natural Resources

02 ECONOMIC DATA

BE Metrics: Gross Value Added, Jobs and Wages

03 SOCIAL DATA

Poverty, Nutrition & Education; Human Development;
Maritime Security Index

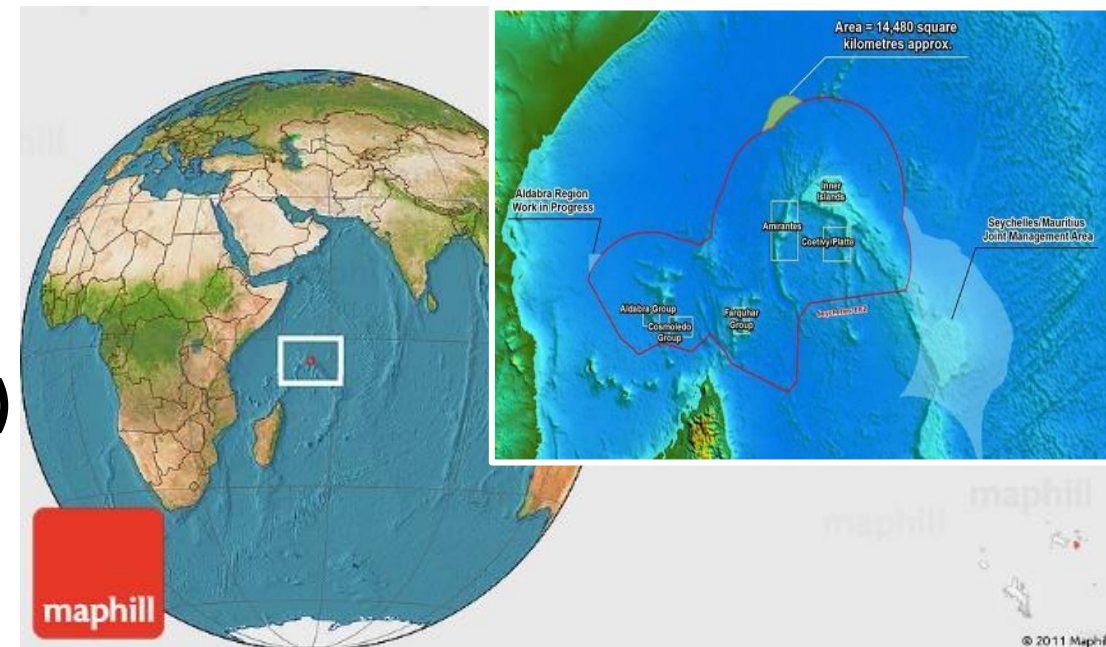
04 ENVIRONMENTAL DATA

Estimating Ecosystems Economic Value

05 CONCLUSIONS AND WAY FORWARD

BLUE ECONOMY IN SEYCHELLES


- 2008: Defaulted on debt repayments
- Debt:GDP ratio still high (>50%)
- Net importer, trade deficit of ~USD300Mn (2018)
- Percentage of Blue Economy-related exports high, ~70% – ~90% (2018)
- Tourism employs ~26%, directly and indirectly accounts for ~55% of GDP
- Fisheries employ ~17%
- EEZ of ~1.35 million km², 30% in MPAs
- Land area of 455km², Population ~98,400
- Recently become a high income country (2017)



BLUE ECONOMY IN SEYCHELLES

- Early adopter of the BE concept - 2013
- Dept. of Blue Economy established in 2015
 - Ministry of Fisheries and Blue Economy
- Transition funding for BE = Innovative
 - Debt for Nature swap, Blue Bond
- Vital to understand value the BE brings
- Assists with identifying
 - Gaps for growth, Opportunities for investment
 - Where data shortages occur, Industries requiring support

Country Profile - Seychelles

Country: 

Situation:



Default currency: Local currency is "Seychelles rupee (SCR)"


Reference Currency:

Reference data year:

ISIC Codes Language:

Deflator (base = 2015):



BLUE ECONOMY IN SEYCHELLES

- **Identify sources of reliable data, key stakeholders**
- **Economic and Social data:**
 - National Bureau of Statistics (NBS) = Primary data source
 - Responsible for Seychelles' System of National Accounts (SNA)
 - Relies heavily on reporting
 - Pivotal stakeholder in most Economic and Social data projects
 - World Bank, Various UN agencies, OECD
- **Ecological data:**
 - Marine Spatial Plan, Ministry of Agriculture, Climate Change and Environment, Seychelles Fishing Authority, IOTC, SeyCCAT



WHY VALUE A COUNTRY'S BLUE ECONOMY?



- Understand how it is being used
- Understand whether it is being used efficiently and responsibly
- Seychelles: BE is integral to well being of the economy, the people and a healthy ocean will support this
- The ocean is impacted not just by marine use, but terrestrial use too

01 THE BLUE ECONOMY IN SEYCHELLES

The Island State's dependence on Natural Resources

02 ECONOMIC DATA

BE Metrics: Gross Value Added, Jobs and Wages

03 SOCIAL DATA

Poverty, Nutrition & Education; Human Development;
Maritime Security Index

04 ENVIRONMENTAL DATA

Estimating Ecosystems Economic Value

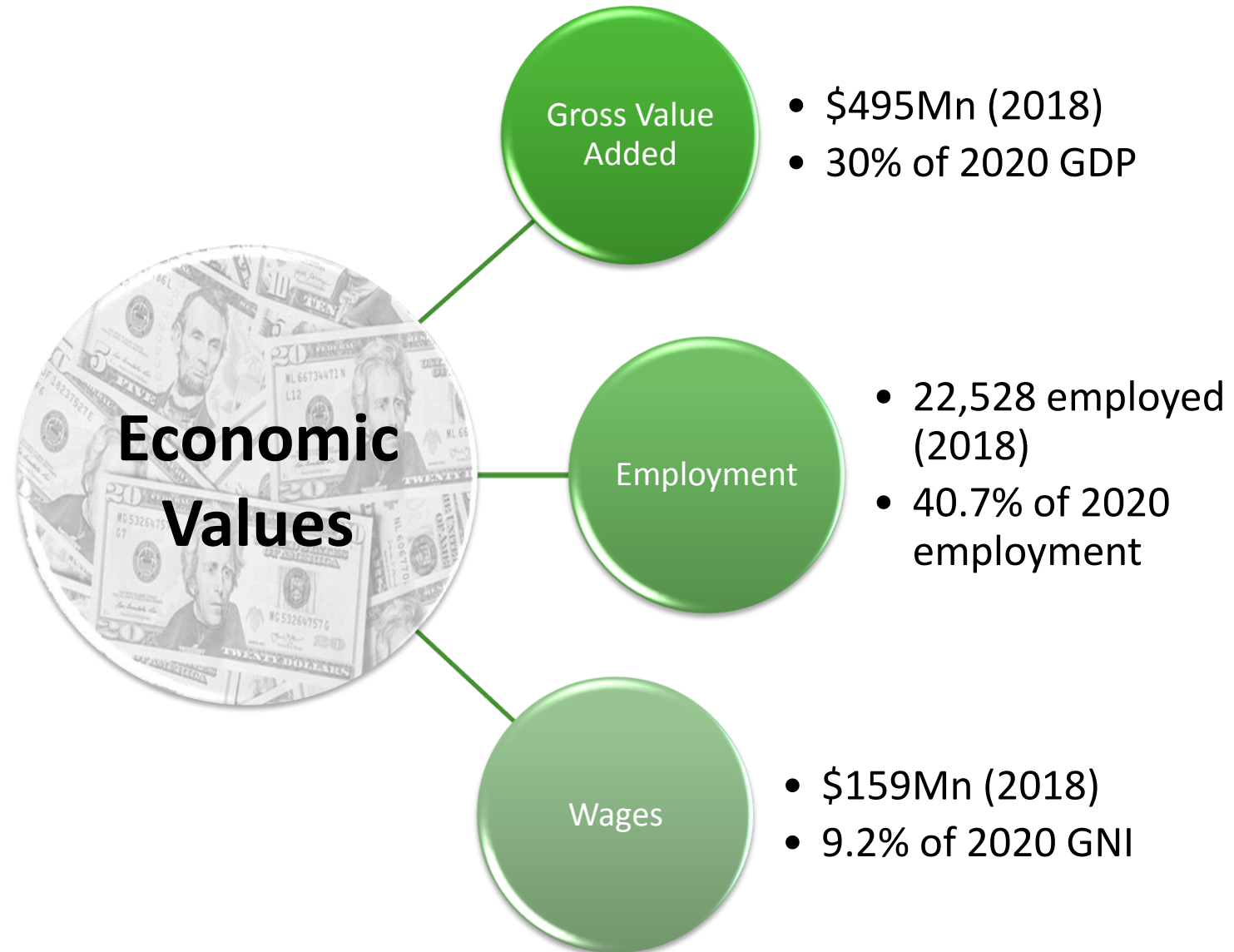
05 CONCLUSIONS AND WAY FORWARD

ECONOMIC DATA – OVERVIEW

- **Data is present, easily accessible at the highest level**
- **Almost all industries have information in the SNA at this level**
- **Applying proportions, or disaggregating data, for the BE is difficult**
- **Indicators:**
 - **GVA**
 - **Employment**
 - **Country wage contribution**

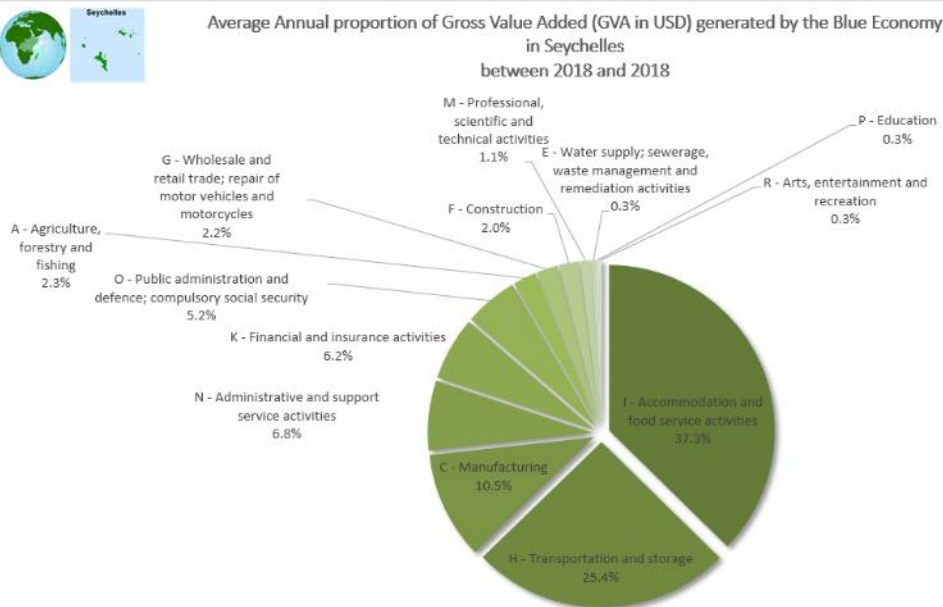
ECONOMIC DATA – INDICATOR RESULTS

- **Sources:**
 - NBS



ECONOMIC DATA – INDICATOR RESULTS

Average Annual proportion of Gross Value Added (GVA in USD) generated by the Blue Economy in Seychelles between 2018 and 2018



Economic Sustainability for Seychelles - GVA Dashboard		
DataYear	(All)	
	US Dollars (USD)	
Economic Activity by ISIC Section	GVA by sector generated by BE (USD)	as a % of Total GVA generated by BE
I - Accommodation and food service activities	185,203,304	37.34%
H - Transportation and storage	126,040,395	25.41%
C - Manufacturing	52,167,033	10.52%
N - Administrative and support service activities	33,885,530	6.83%
K - Financial and insurance activities	30,776,157	6.21%
O - Public administration and defence; compulsory social security	25,970,249	5.24%
A - Agriculture, forestry and fishing	11,277,298	2.27%
G - Wholesale and retail trade; repair of motor vehicles and motorcycles	10,682,382	2.15%
F - Construction	9,697,912	1.96%
M - Professional, scientific and technical activities	5,667,583	1.14%
E - Water supply; sewerage, waste management and remediation activities	1,723,352	0.35%
P - Education	1,561,391	0.31%
R - Arts, entertainment and recreation	1,294,278	0.26%
Grand Total	495,946,864	100.00%

ECONOMIC DATA – CHALLENGES

- **Highly aggregated – SNA reports to level 1 in most cases.**
- **Compromises accuracy of reporting**
- **In some instances more detailed data is available, but not reported in SNA**
- **Discounting values relevant to BE per industry is difficult**

01 THE BLUE ECONOMY IN SEYCHELLES

The Island State's dependence on Natural Resources

02 ECONOMIC DATA

BE Metrics: Gross Value Added, Jobs and Wages

03 SOCIAL DATA

Poverty, Nutrition & Education; Human Development;
Maritime Security Index

04 ENVIRONMENTAL DATA

Estimating Ecosystems Economic Value

05 CONCLUSIONS AND WAY FORWARD

SOCIAL DATA – OVERVIEW

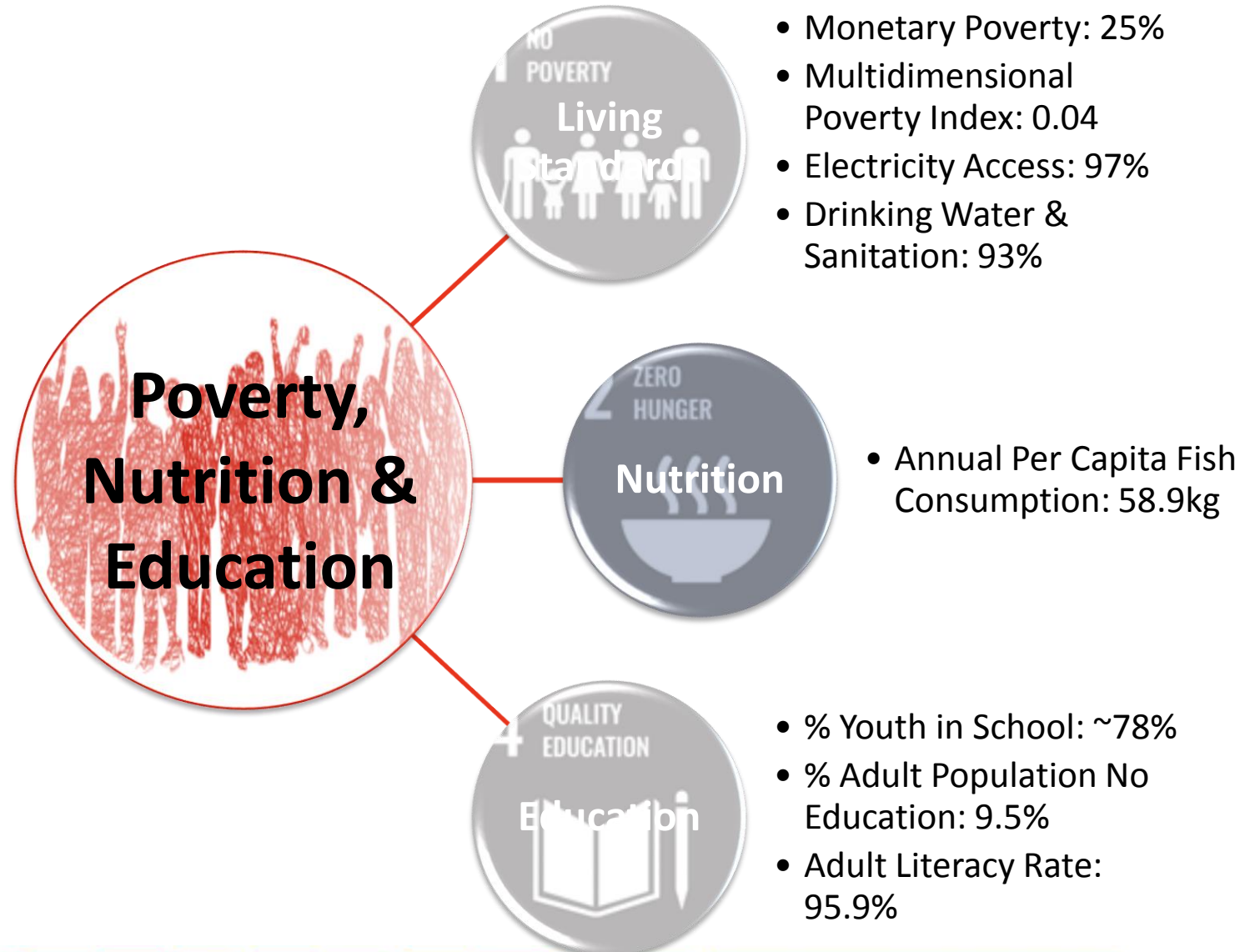
- **Linked to SDGs and common to the BEVTK user nations**
- **Indicators:**
 - **Poverty, Nutrition & Education**
 - **Human Development**
 - **Maritime Security Index**
- **Unique to Seychelles:**
 - **Tertiary education?**
 - **Artisanal fishery? Important from livelihood, food security and cultural perspective**



SOCIAL DATA – INDICATOR RESULTS

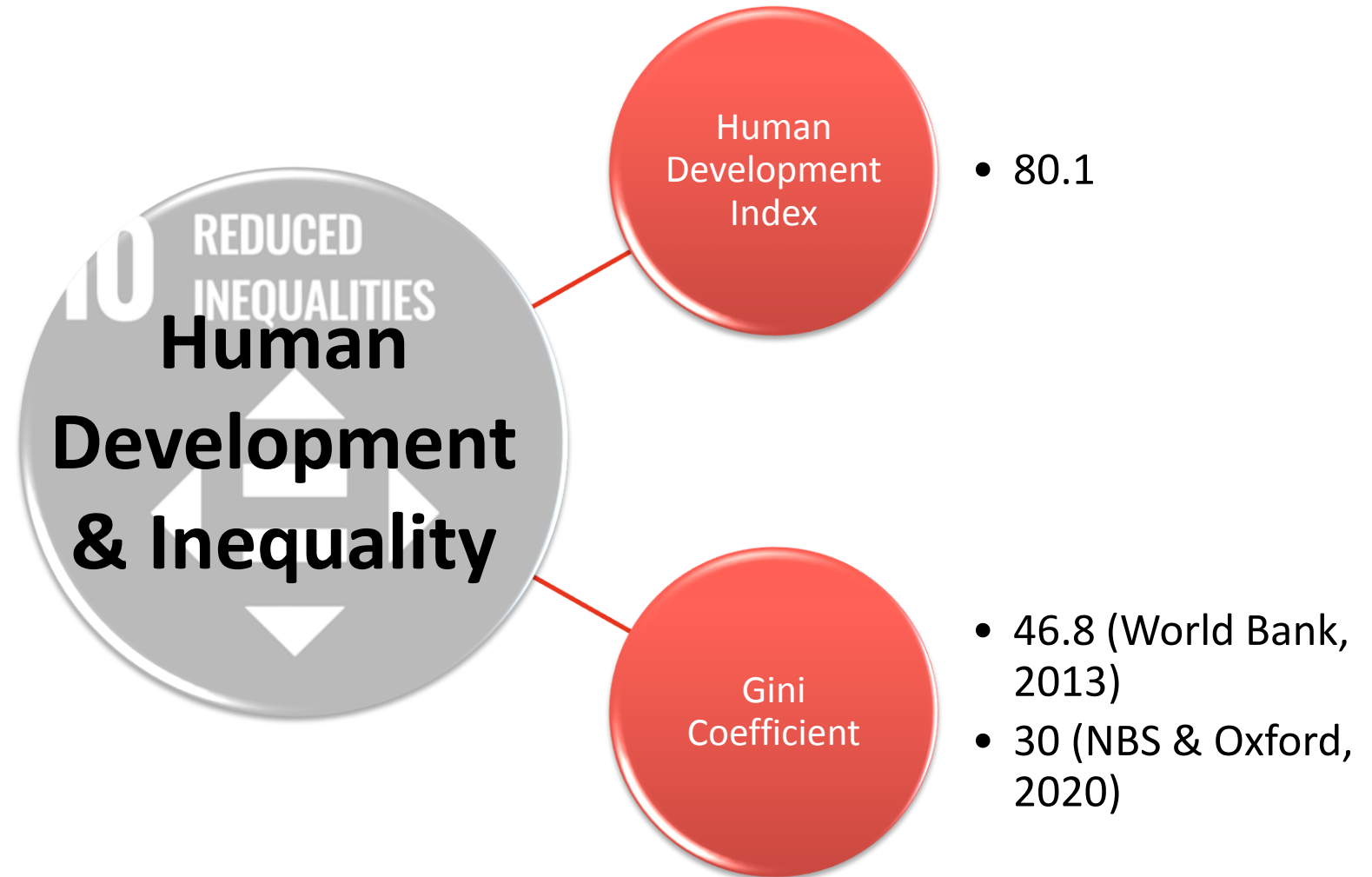
- **Sources:**

- NBS
- FAO Food Balance
- OECD



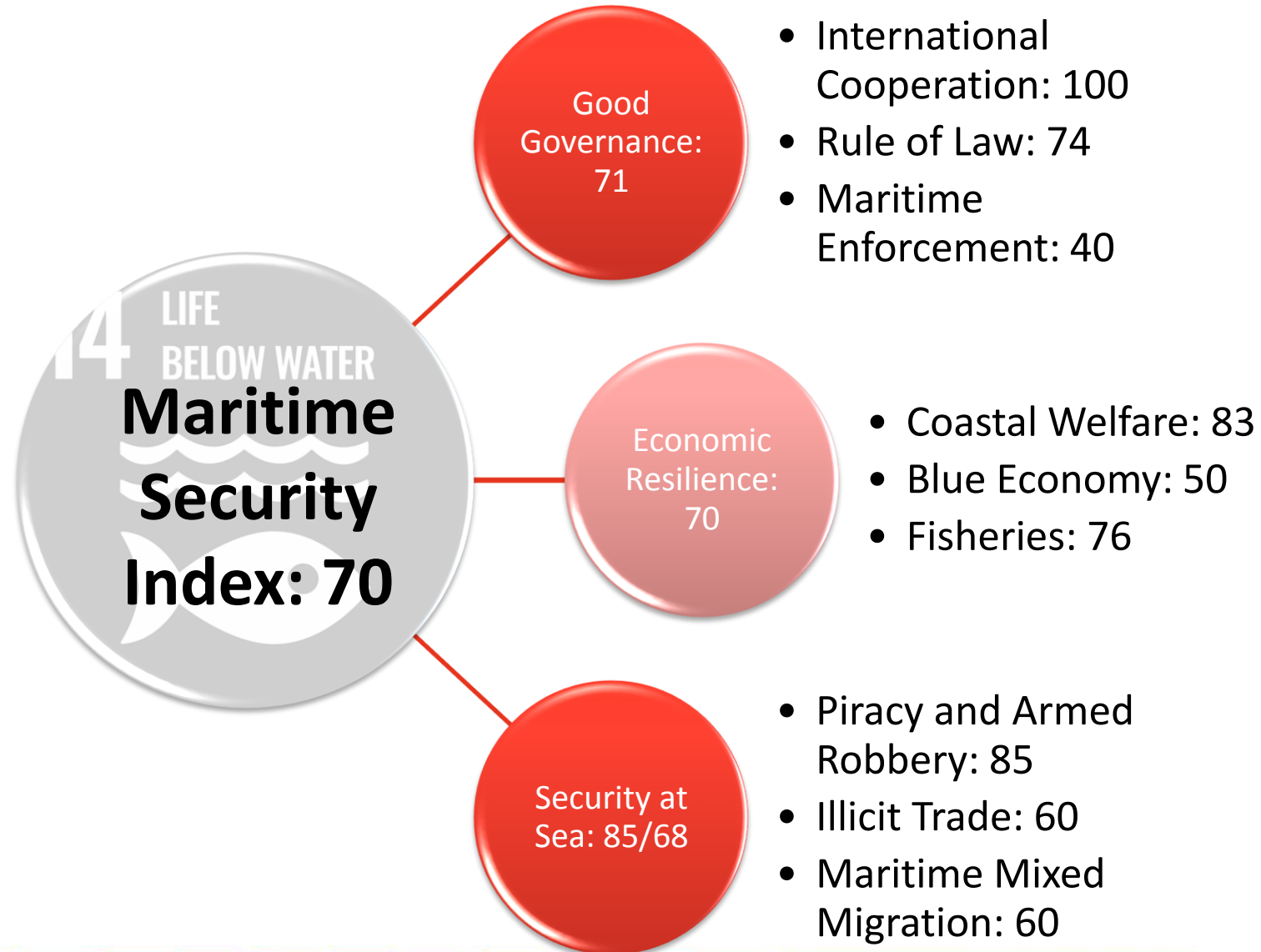
SOCIAL DATA – INDICATOR RESULTS

- **Sources:**
 - UNDP
 - UNDEP (World Bank)
 - NBS



SOCIAL DATA – INDICATOR RESULTS

- **Sources:**
 - Stable Seas



SOCIAL DATA – INDICATOR RESULTS

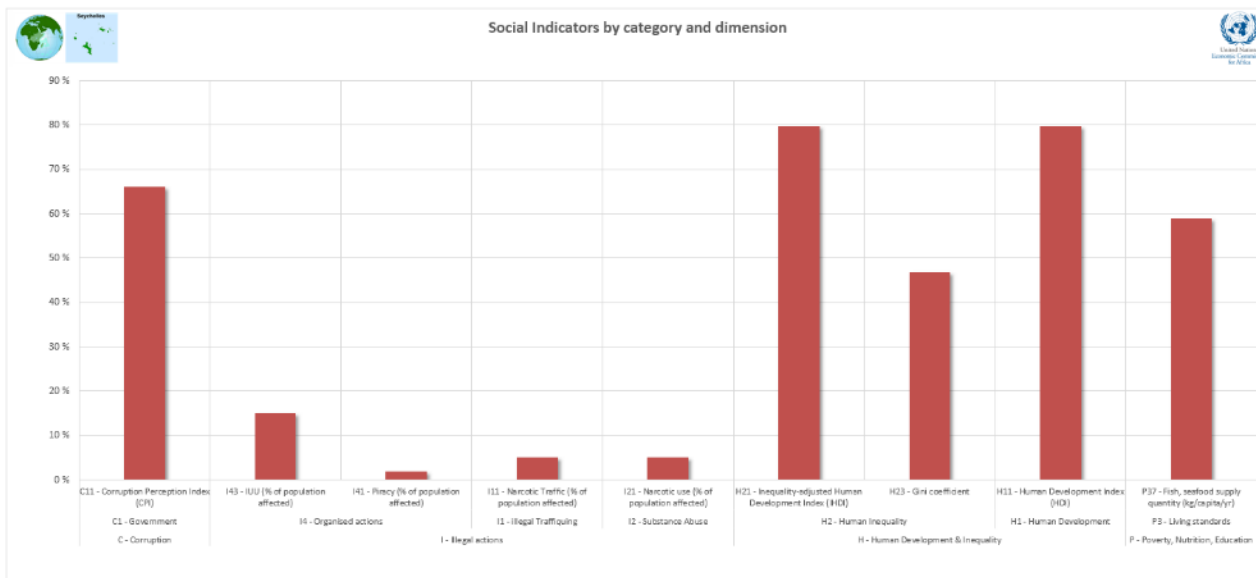


Social Sustainability Summary for Seychelles - Dashboard

Social Indicators by category and dimension

DataYear (All) ▾

Social category/dimension/ indicator ▾	Social Indicator value (%)
C - Corruption	66.00
C1 - Government	66.00
C11 - Corruption Perception Index (CPI)	66.00
I - Illegal actions	6.75
I4 - Organised actions	8.50
I43 - IUU (% of population affected)	15.00
I41 - Piracy (% of population affected)	2.00
I1 - illegal Traffiquing	5.00
I11 - Narcotic Traffic (% of population affect)	5.00
I12 - Substance Abuse	5.00
I21 - Narcotic use (% of population affected)	5.00
H - Human Development & Inequality	68.73
H2 - Human Inequality	63.25
H21 - Inequality-adjusted Human Developm	79.70
H23 - Gini coefficient	46.80
H1 - Human Development	79.70
H11 - Human Development Index (HDI)	79.70
P - Poverty, Nutrition, Education	58.90
P3 - Living standards	58.90
P37 - Fish, seafood supply quantity (kg/cap	58.90
Composite Social Index value	39.79



SOCIAL DATA – CHALLENGES

- **Some social data is collected, but hard to create a distinct BE link**
- **Some social statistics are not reported to NBS that would be of importance, e.g. Drug seizures, piracy incidents, vulnerable livelihoods of fishers**
- **Country specific indicators can be developed, but require data access, or data collection, and manipulation**
- **Projects are ongoing that are gathering fishery oriented data by SFA**

01 THE BLUE ECONOMY IN SEYCHELLES

The Island State's dependence on Natural Resources

02 ECONOMIC DATA

BE Metrics: Gross Value Added, Jobs and Wages

03 SOCIAL DATA

Poverty, Nutrition & Education; Human Development;
Maritime Security Index

04 ENVIRONMENTAL DATA

Estimating Ecosystems Economic Value

05 CONCLUSIONS AND WAY FORWARD

ECOSYSTEM DATA – OVERVIEW

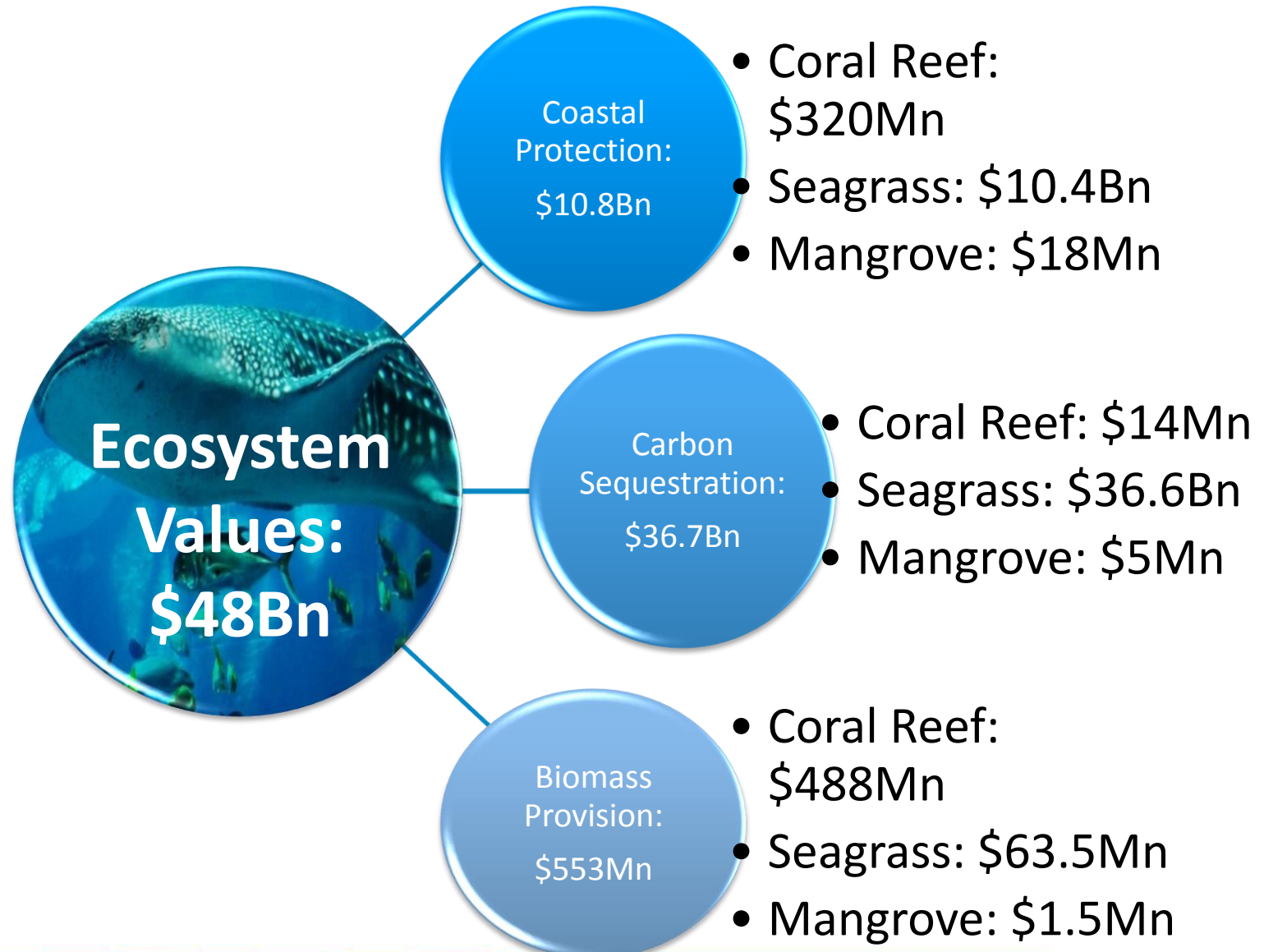
- **Data gathered from Marine Spatial Plan (MSP) documents, National Biodiversity Strategic Action Plan**
- **Focused on Coral Reefs, Mangroves and Seagrass Meadows at the moment**
 - **Sea mounts, marine canyons exist, and many important spawning grounds**
- **Mangrove (25Km²) and Coral Reef (1,700Km²) data available**
- **Seagrass (27,300km² in MPAs): estimated value from MSP documents**
- **Per unit values based on published valuation studies**

ECOSYSTEM DATA – INDICATOR RESULTS

Valued at \$48Bn



Sources:

- MSP Nomination File
- NBSAP
- Tregarot, Failer & Marechal (2017) – valuation data



ECOSYSTEM DATA – INDICATOR RESULTS

Valued at \$48Bn

 Ecosystem Services for Seychelles - Dashboard 		
(USD) Ecosystem Classification/ Service	Estimated Value of Ecosystem Service	Ecosystem Service Contribution to the overall
3 - Marine - Neritic	48,047,938,882	100.0%
3.08 - Coral reef		
3.08.1 - Outer Reef Channel	839,011,701	1.7%
1 - Provisioning (Biotic)	506,490,988	1.1%
1.1 - Biomass	506,490,988	1.1%
2 - Regulation & Maintenance (Biotic)	332,520,713	0.7%
2.2 - Regulation of physical, chemical, biological conditions	317,978,794	0.7%
2.1 - Transformation of biochemical or physical inputs to ecosystems	14,541,919	0.0%
3.09 - Seagrass		
(blank)	47,208,927,181	98.2%
1 - Provisioning (Biotic)	63,515,559	0.1%
1.1 - Biomass	63,515,559	0.1%
2 - Regulation & Maintenance (Biotic)	47,145,411,621	98.1%
2.2 - Regulation of physical, chemical, biological conditions	10,470,365,955	21.8%
2.1 - Transformation of biochemical or physical inputs to ecosystems	36,675,045,666	76.3%
6 - Marine - Intertidal	20,855,596	0.0%
6.07 - Mangrove Submerged Roots		
(blank)	20,855,596	0.0%
1 - Provisioning (Biotic)	1,476,044	0.0%
1.1 - Biomass	1,476,044	0.0%
2 - Regulation & Maintenance (Biotic)	19,379,552	0.0%
2.2 - Regulation of physical, chemical, biological conditions	14,067,252	0.0%
2.1 - Transformation of biochemical or physical inputs to ecosystems	5,312,300	0.0%
Grand Total	48,068,794,478	100.0%

ECOSYSTEM DATA – CHALLENGES

- **Data exists, but difficult to find and obtain**
- **Data is not standardized**
- **Lack of measurable data, and consistency, in ecological data collection**
- **Input of values requires personnel to be familiar with ecosystem services**

01 THE BLUE ECONOMY IN SEYCHELLES

The Island State's dependence on Natural Resources

02 ECONOMIC DATA

BE Metrics: Gross Value Added, Jobs and Wages

03 SOCIAL DATA

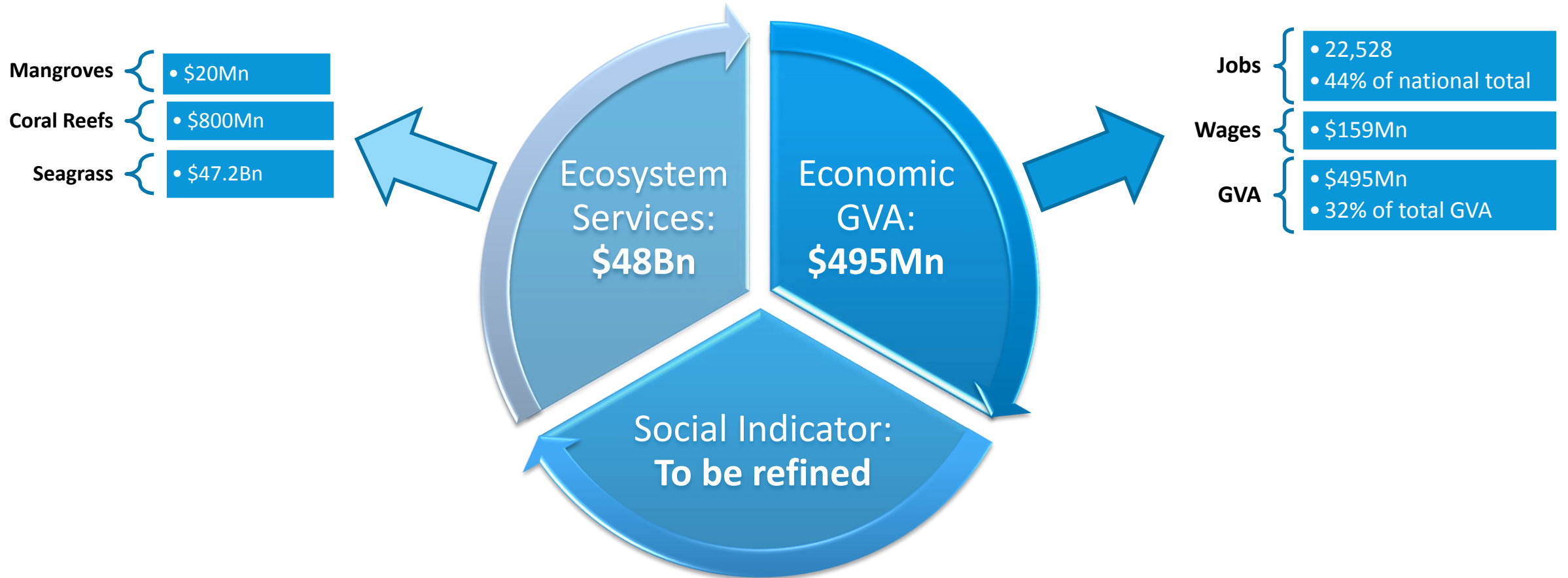
Poverty, Nutrition & Education; Human Development;
Maritime Security Index

04 ENVIRONMENTAL DATA

Estimating Ecosystems Economic Value

05 CONCLUSIONS AND WAY FORWARD

ESTIMATED VALUES FOR SEYCHELLES BLUE ECONOMY



CONCLUSIONS

- **Phase II has delivered more sound results, that will benefit from comments by stakeholders**
- **Difficulties remain with apportioning data to the BE in a small, intricately ocean-oriented country**
- **Further environmental data would benefit from collaborative planning**
- **Prioritise which ecosystems should be measured and valued**
- **BEVTK is a good tool that presents snapshot and summarises data**
- **Being flexible, BEVTK has a high potential use and applicability value**
- **Addresses the opportunity of centralising key data relevant to BE**

WAY FORWARD

- **Need to decide who to be custodian – custodian will need assistance**
- **Will only work if we highlight where data sources are, and what needs to be done to gather the data**
 - **Need to ensure the process will be replicable and ‘easy’ for the implementing department**
- **Can drive further investment in BE, both locally and internationally**
- **Discounting relevant to BE will become more accurate in time – SUTs, Satellite Accounts**
- **Most important is ease of use, and knowledge of tool**



THANK YOU!

<http://bit.ly/SeychellesBE>

Ideas
to
Action

Questions and Discussion points?

DISCUSSION POINTS

- Are the indicators included in the socio-economic assessment representative of Seychelles' Blue Economy? How could they be improved?
- Are there any other Seychelles' specific socioeconomic indicators that should be included?
- Can any indicators suggested above be collected and compiled accurately and cost effectively within a suitable time-frame going forward?
- Are the results of the BEVTK likely to be used by government or policy makers going forward?
- What failings do you see with the BEVTK, and how could them be improved?